

600153

2008

..... 2

..... 2

..... 3

..... 4

..... 7

..... 9

..... 10

..... 10

..... 17

..... 17

- ( )
- ( )
- ( )
- ( )

	XI AN EN C&D I NC
	52
	0592- 2132319
	0592- 2112185- 3616
	l m@chi nacnd. com
	52
	0592- 2132319
	0592- 2112185- 3682
	wpl ee@chi nacnd. com
	52
	52
	361001
	ht t p: //www chi nacnd. com
	pub@chi nacnd. com
	ht t p: //www sse. com cn
A	600153
	1998 6 10
	3502001003244
	350203260130346
	26013034- 6
	27 A12 1201
	1204

( )

	765,009,482.12
	817,016,865.06
	623,111,127.02
	610,416,923.56
	740,342,419.33

( )

	-2,834,795.79
	12,175,425.40
	5,473,971.57
	-2,840,873.38
	6,700,000.00
	2,666,753.33
	-659,997.07
	20,680,484.06
	7,986,280.60
	12,694,203.46
	610,416,923.56

( )

	2008	2007	(%)	2006
	33,886,892,669.30	29,588,446,202.11	14.53	21,011,083,711.06
	817,016,865.06	933,746,248.31	-12.50	572,795,858.89
	623,111,127.02	711,134,707.65	-12.38	455,975,442.63
	610,416,923.56	565,445,431.95	7.95	377,543,584.96
	0.50	0.62	-19.35	0.74
	0.50	0.62	-19.35	0.74
	0.49	0.49	0	0.61
%	12.16	14.55	2.39	16.33
%	12.36	20.48	8.12	16.98
%	11.91	11.57	0.34	13.52

	12 11	16 29	4 18	14 06
%	740,342,419.33	-523,501,010.91	<b>241.42</b>	-196,079,611.48
	0.60	-0.76	<b>178.95</b>	-0.32
	2008	2007	(%)	2006
	15,807,964,221.82	15,330,829,872.83	3.11	9,084,511,931.19
	5,123,617,340.17	4,888,616,298.94	4.81	2,791,732,576.01
	4.12	7.08	-41.81	4.52

1 —

2007

( )  
1

		(%)							(%)
1									
2	256,640,000	37.16			205,312,000		205,312,000	461,952,000	37.16
3	73,063,809	10.58			58,451,047		58,451,047	131,514,856	10.58
	73,063,809	10.58			58,451,047		58,451,047	131,514,856	10.58
	329,703,809	47.74			263,763,047		263,763,047	593,466,856	47.74
1	360,960,000	52.26			288,768,000		288,768,000	649,728,000	52.26
2									
3									
4									
	360,960,000	52.26			288,768,000		288,768,000	649,728,000	52.26
	690,663,809	100			552,531,047		552,531,047	1,243,194,856	100

2

	318,400,000	111,168,000	254,720,000	461,952,000		2008 -4 10
	20,000,000	36,000,000	16,000,000	0		2008 9 16
	10,000,000	18,000,000	8,000,000	0		2008 9 16
	10,000,000	18,000,000	8,000,000	0		2008 9 16

	10,000,000	18,000,000	8,000,000	0		2008 9 16
	10,000,000	18,000,000	8,000,000	0		2008 9 16
	10,000,000	18,000,000	8,000,000	0		2008 9 16
	3,063,809	5,514,856	2,451,047	0		2008 9 16
	391,463,809	242,682,856	313,171,047	461,952,000	/	/

( )  
1

:

A	2007 9 7	20.53	73,063,809	2008 9 16	73,063,809	

2

	( )		(% )	
	2007	2008	2007	2008
	318,400,000	461,952,000	46.10	37.16
	73,063,809	0	10.58	0
	391,463,809	461,952,000	56.68	37.16
	299,200,000	781,242,856	43.32	62.84
	299,200,000	781,242,856	43.32	62.84
	690,663,809	1,243,194,856	100.00	100.00

3

( )  
1

				50,940	
		(%)			
		46.10	573,120,000	254,720,000	461,952,000
		3.61	44,870,721		0
		2.23	27,751,962		0

		1.45	18,000,000	8,000,000	0	
		1.42	17,650,000		0	
		1.04	12,885,899		0	
		0.97	12,000,000		0	
-		0.91	11,282,725		0	
		0.88	11,000,000	1,000,000	0	
-		0.88	10,999,496		0	
		10 2 3 6 10				
			111,168,000			
			44,870,721			
			27,751,962			
			18,000,000			
			17,650,000			
			12,885,899			
			12,000,000			
-			11,282,725			
			11,000,000			
-			10,999,496			
			10 2 3 6 10			

1.	461,952,000	2009 4 10	461,952,000	24	12	6
				/		

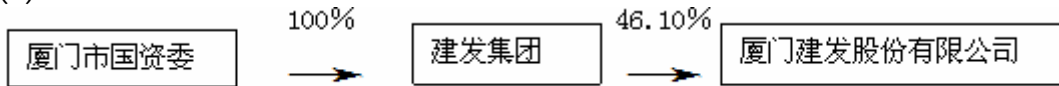
2  
(1)

		30	1980 12 20	

(2)


(3)

(4)



3

( )

			57	2007	4	26	2010	4	26	63,078	113,540	50462			
			54	2007	4	26	2010	4	26	63,078	122,540	59462			
			44	2007	4	26	2010	4	26	35,482	63,867	28385	102.57		
			49	2007	4	26	2010	4	26	35,023	63,041	28018	99.94		
			53	2007	4	26	2010	4	26	15,770	28,386	12616			
			57	2007	4	26	2010	4	26	0	0	0			
			53	2007	4	26	2010	4	26	0	0	0	6.32		
			42	2007	4	26	2010	4	26	0	0	0	6.32		
			41	2007	4	26	2010	4	26	0	0	0	6.32		
			53	2007	4	26	2010	4	26	13,039	23,470	10431			
			39	2007	4	26	2010	4	26	0	0	0			
			38	2007	4	26	2010	4	26	0	0	0	31.32		
			41	2007	4	26	2010	4	26	19,712	35,481	15769	74.72		
			52	2007	4	26	2010	4	26	2,464	4,435	1971	82.99		
			47	2007	4	26	2010	4	26	15,770	28,386	12616	68.14		
	/	/	/	/						260,952	483,146	222194	/	/	478.64



5

- 1.
- 2.
- 3.
- 4.
- 5.
- 6.
- 7.
- 8.
- 9.
- 10.
- 11.
- 12.
- 13.
- 14.
- 15.

NBA

( )

			1998	2	1
			2000	2	1
			2001	2	1
			2001	2	1
			2001	2	1
			1997	2	1
			2006	1	31

( )

1

2

2008

2008

( )

( )

	5,497		0
--	-------	--	---



--	--

( )

ISO

( )

1

2

( )

( )

( )

2008	2008 6 10		2008 6 12

( )

2008	2008 1 7		2008 1 8

( )

1

2008

338.87

10.48%

14.53

17.17

6.9



	740,342,419.33	-523,501,010.91	1,263,843,430.24	241.42%
	-931,986,616.55	3,186,557,317.06	-4,118,543,933.61	-129.25%

1		36.35%		
2		57.50%		
3		69.50%		
4		225.13%		
5		74.06%		
6		28.57%		
7		127.62%		
8		33.54%		
9		81.02%		
10		51.93%		
11		86.99%		
12		72.38%		
13		89.86%		
14		31.71%		
15		85.63%		
16		302.06%		
17		80%		
18		36.35%		10%
19		30.86%		
20		391.31%		
21		33.70%		
22		22.06%		
23		241.42%		
24		129.25%		
2007	10			

**2**

		100,000	490,800	143,225	1,510,967	26,034	18,416
		15,000	191,577	152,895	14,480	7,354	7,291

		20,000	46,524	22,240	110,161	1197	1,301
		20,000	141,888	23,648	437,861	4301	3,674
		30,000	145,313	34,651	557,152	4,983	4,072
		10,000	22,446	18,212	106,797	9,376	7,792
		5,000	11,988	7,116	31,169	2,163	1,764

3

	1,742,225,703.23	1,750,526,073.23
	5.14%	5.92%

4

2009  
2009

2009

4

2008

2009

- 1
- 2
- 1
- 2
- 3

3 2009

300

294

2009

4

2009

50

4

1	2	3	4	5	6
1.	8,564.38	-4,658.19	/	/	3,639.78
	0	32.31	/	/	12.88
2.	35,798.49	/	-20,660.07	/	9,286.15
	44,362.87	-4,625.88	-20,660.07	/	12,938.81
	19.42	/	/	/	0
	/	/	/	/	/
	/	/	/	/	/
3	/	/	/	/	/
	44,382.29	-4,625.88	-20,660.07	/	12,938.81

5

6

			%	(%)	(%)	(%)
	15,786,317,566.57	15,122,151,032.50	4.21	27.27	25.90	1.04
	15,967,060,848.55	15,341,254,345.88	3.92	10.91	10.31	0.52
	1,040,650,327.65	584,686,079.24	43.82	-42.04	-44.58	2.58
	389,315,631.97	356,086,656.64	8.54	5.00	4.05	0.84
	371,315,924.53	308,192,217.36	17.00	29.35	30.26	0.58
	135,698,613.35	67,872,999.79	49.98	6.82	5.44	0.65
	99,592,957.71	30,668,895.74	69.21	41.13	34.17	1.60
	96,940,798.97	22,711,898.54	76.57	-29.44	-74.53	41.47
	33,886,892,669.3	31,833,624,125.69	6.06	14.53	14.80	0.23

)

1, 014, 754, 472 31

254, 882, 325. 14

33. 54%

		(%)
		50
		40
		20

1

2007

140,715.41

147,429.70

6714.29

2

	40,000		40,000		/
	38,500		38,500		/
	20,000		20,000		/
	20,000		16,519.67	2008	/
	11,500		5,695.74		/
	20,000		0		19 2008 5 2008 6 10 2007
	<b>150,000</b>		120,715.41	/	/

3

(1)

12000

(2)

26,611,467.65

(3)

2000

2008

18.58

(4)

200

(5)

3000

( )

( )

1

	2008 2 4		2008 2 13
	2008 4 9		2008 4 11
	2008 4 28		2008 4 30
	2008 5 19		2008 5 21



	2008 6 10			2008 6 12
	2008 7 17			2008 7 19
	2008 8 20			2008 8 22
	2008 10 29			2008 10 31

2

1 2008

2007

2 2007

A 2007

2007

7 28

8 4

B

2008

10 8

3.00

2008

2008 8 1

2008

2008 8 5

2008 8 8

3

2008 1 7 2008

2008

2008

2

2007

"

"

2008

2008

2008

2008

2008

2008

4

2008 1 7 2008

2008

2009 4

2008

( )

2008

690,165,469.13

623,111,127.02

1,130,343,091.65

2008

207,199,142.70

67,144,587.26

2008

1,479,110,488.71

2008

2008

1,243,194,856

10

2.50

310,798,714

( )

			(%)
2005	247,040,000	212,871,860.97	116.05%
2006	308,800,000.00	433,942,166.68	71.16%
2007	207,199,142.70	711,134,707.65	29.14%

( )

	2008 4 11	2007	2007
	2008 5 19		2008

( )

2008

( )

2008

( )

10

2007

2008 5 19

2008 6

( )

2008

( )

( )

( )

1

1	310358		10,000,000.00	7,125,129.38	3,337,410.60	-14,645,800.10
2	310328		10,000,000.00	11,870,557.42	6,124,020.57	-8,653,636.37
3	180012		10,000,000.00	7,760,186.26	4,818,299.65	-4,912,197.90
4	519008		10,000,000.00	3,763,125.21	7,453,998.42	-8,142,434.45
5	590001		10,000,000.00	5,069,972.62	3,925,172.80	-5,847,706.42
6	040005		10,000,000.00	3,635,570.42	5,961,971.93	-5,591,143.75
7	450002		10,000,000.00	4,183,331.94	4,648,100.12	-4,515,233.50
				-		
			70,000,000.00		36,268,974.09	-52,308,152.49

2

:

601872	37,100,000.00	0.29	38,600,000	710,000	-73,912,000	
601328	20,541,525.44	0.03	53,672,598.42	24,914,646.14	-139,672,305.90	
	57,641,525.44	/	92,272,598.42	25,624,646.14	-213,584,305	-

3

15,731,903.80

( )

( )

1

: :

		21,604,262.40	
		20,577,372.12	
		78,699,131.38	
		25,420,437.07	

2

: :

		- 1, 041, 935. 62	50, 000	- 15, 830, 792. 51	103, 036, 300. 24
				- 1, 562, 964. 42	2, 286, 360. 49
	/	- 1, 041, 935. 62	50, 000	- 17, 393, 756. 93	105, 322, 660. 73

0

3

( )

"

"

( )  
2007

12000

6000

2,032,811.93

( )

1

(1)

(2)

(3)

2008 1

3,850,000.00

2008 1 1 2008 12 31

3,850,000.00

9,478,511.34

2008 12 31

260,000.00

2008 12 31

2

			0		
			0		
RMB3,224,043,112.81					
USD92,452,744.37					

	RMB3,224,043,112.81 USD92,452,744.37
	96.39
	0
70	
50	1,855,722,241.69
	1,855,722,241.69

3

4

( )

5%

	1,	
	/ " P" /	5.2
	10 8	
	P 2	
	24 6 /	12

( )

195

7

( )

( )

2008		2008 1 8	<a href="http://www.sse.com.cn">http://www.sse.com.cn</a>
00		2008 1 25	<a href="http://www.sse.com.cn">http://www.sse.com.cn</a>
		2008 2 6	<a href="http://www.sse.com.cn">http://www.sse.com.cn</a>
		2008 4 8	<a href="http://www.sse.com.cn">http://www.sse.com.cn</a>
		2008 4 10	<a href="http://www.sse.com.cn">http://www.sse.com.cn</a>
2008		2008 4 10	<a href="http://www.sse.com.cn">http://www.sse.com.cn</a>
		2008 4 10	<a href="http://www.sse.com.cn">http://www.sse.com.cn</a>
		2008 4 21	<a href="http://www.sse.com.cn">http://www.sse.com.cn</a>
2007		2008 5 20	<a href="http://www.sse.com.cn">http://www.sse.com.cn</a>
		2008 5 20	<a href="http://www.sse.com.cn">http://www.sse.com.cn</a>
2007		2008 6 12	<a href="http://www.sse.com.cn">http://www.sse.com.cn</a>
		2008 6 12	<a href="http://www.sse.com.cn">http://www.sse.com.cn</a>
	2007	2008 7 3	<a href="http://www.sse.com.cn">http://www.sse.com.cn</a>
		2008 7 19	<a href="http://www.sse.com.cn">http://www.sse.com.cn</a>
		2008 7 19	<a href="http://www.sse.com.cn">http://www.sse.com.cn</a>
2007		2008 7 28	<a href="http://www.sse.com.cn">http://www.sse.com.cn</a>
2008		2008 8 22	<a href="http://www.sse.com.cn">http://www.sse.com.cn</a>
		2008 9 9	<a href="http://www.sse.com.cn">http://www.sse.com.cn</a>
	00	2008 9 13	<a href="http://www.sse.com.cn">http://www.sse.com.cn</a>
		2008 10 8	<a href="http://www.sse.com.cn">http://www.sse.com.cn</a>
2008		2008 10 31	<a href="http://www.sse.com.cn">http://www.sse.com.cn</a>
		2008 11 26	<a href="http://www.sse.com.cn">http://www.sse.com.cn</a>

( )

2008 12 31

:

: :

		1, 500, 128, 888. 66	2, 356, 865, 593. 02
		36, 397, 814. 09	85, 643, 839. 67
		159, 968, 102. 08	524, 488, 128. 55
		624, 249, 663. 37	604, 691, 438. 07
		2, 173, 007, 667. 54	2, 297, 724, 764. 79
		3, 312, 500. 00	
		7, 843, 140. 00	
		306, 086, 616. 80	351, 960, 495. 80
		5, 660, 974, 107. 78	4, 645, 376, 187. 55
		112, 805, 998. 58	34, 695, 197. 27
		<b>10, 584, 774, 498. 90</b>	<b>10, 901, 445, 644. 72</b>
		92, 861, 468. 42	357, 984, 933. 46
		25, 000, 000. 00	35, 000, 000. 00
		102, 313, 158. 53	44, 949, 023. 57
		1, 014, 754, 472. 31	759, 872, 147. 17
		1, 134, 733, 516. 96	626, 851, 076. 28
		1, 108, 521, 145. 54	1, 123, 830, 381. 11
		974, 173, 128. 51	641, 190, 750. 95
		514, 272, 811. 88	621, 730, 641. 43
		167, 062, 157. 63	167, 062, 157. 63
		22, 185, 559. 85	11, 864, 548. 52
		67, 312, 303. 29	39, 048, 567. 99
		<b>5, 223, 189, 722. 92</b>	<b>4, 429, 384, 228. 11</b>
		<b>15, 807, 964, 221. 82</b>	<b>15, 330, 829, 872. 83</b>

		1, 087, 174, 058. 56	1, 341, 622, 140. 50
			194, 225. 00
		1, 597, 770, 509. 38	841, 531, 088. 62
		1, 652, 886, 602. 83	1, 354, 926, 656. 96
		2, 355, 554, 461. 18	2, 657, 456, 971. 73
		127, 293, 923. 82	150, 611, 307. 16
		83, 808, 547. 79	122, 719, 520. 09
		9, 569, 169. 11	42, 491, 915. 78
		6, 169. 18	606, 169. 18
		576, 085, 524. 91	496, 172, 402. 99
		1, 638, 506, 840. 00	407, 531, 040. 00
		23, 340, 066. 59	1, 014, 789, 676. 04
		<b>9, 151, 995, 873. 35</b>	<b>8, 430, 653, 114. 05</b>
		1, 255, 465, 580. 00	1, 684, 492, 620. 00
		3, 204, 468. 30	2, 701, 546. 15
		8, 029, 770. 61	55, 879, 252. 05
		1, 266, 699, 818. 91	1, 743, 073, 418. 20
		<b>10, 418, 695, 692. 26</b>	<b>10, 173, 726, 532. 25</b>
		1, 243, 194, 856. 00	690, 663, 809. 00
		2, 143, 086, 668. 24	2, 879, 930, 833. 39
		251, 843, 369. 22	184, 698, 781. 96
		1, 479, 110, 488. 71	1, 130, 343, 091. 65
		6, 381, 958. 00	2, 979, 782. 94
		5, 123, 617, 340. 17	4, 888, 616, 298. 94
		265, 651, 189. 39	268, 487, 041. 64
		5, 389, 268, 529. 56	5, 157, 103, 340. 58
		<b>15, 807, 964, 221. 82</b>	<b>15, 330, 829, 872. 83</b>



2008 12 31

:

: :

		429,739,954.24	910,660,766.71
		36,397,814.09	85,643,839.67
		24,677,330.90	393,727,875.08
		320,006,868.08	548,606,299.87
		1,108,507,464.74	1,285,384,835.17
		1,307,789,176.27	1,509,848,184.77
		1,540,053,082.85	1,602,201,566.00
		<b>4,767,171,691.17</b>	<b>6,336,073,367.27</b>
		38,610,905.00	128,700,000.00
		300,000,000.00	300,000,000.00
		4,317,121,431.49	3,216,769,494.22
		183,498,416.05	138,942,505.85
		56,731,875.77	56,936,484.18
		436,984.00	166,627,519.29
		165,635,765.84	264,372,342.15
		1,167,017.63	282,144.26
		41,471,222.92	19,358,717.16
		5,104,673,618.70	4,291,989,207.11
		<b>9,871,845,309.87</b>	<b>10,628,062,574.38</b>

		737, 008, 496. 49	1, 047, 431, 859. 63
			194, 225. 00
		663, 714, 536. 24	519, 858, 242. 95
		705, 023, 681. 74	1, 048, 971, 734. 00
		2, 652, 986, 758. 54	2, 007, 357, 700. 78
		20, 067, 419. 26	23, 195, 119. 20
		48, 261, 510. 74	41, 759, 625. 84
		5, 043, 279. 01	38, 326, 227. 93
		729, 176, 119. 14	1, 047, 117, 388. 56
		50, 000, 000. 00	
			1, 000, 000, 000. 00
		<b>5, 611, 281, 801. 16</b>	<b>6, 774, 212, 123. 89</b>
		260, 000, 000. 00	259, 373, 600. 00
		300, 000. 00	19, 304, 791. 14
		<b>260, 300, 000. 00</b>	<b>278, 678, 391. 14</b>
		<b>5, 871, 581, 801. 16</b>	<b>7, 052, 890, 515. 03</b>
		1, 243, 194, 856. 00	690, 663, 809. 00
		2, 096, 800, 410. 06	2, 688, 486, 737. 60
		251, 843, 369. 22	184, 698, 781. 96
		408, 424, 873. 43	11, 322, 730. 79
		<b>4, 000, 263, 508. 71</b>	<b>3, 575, 172, 059. 35</b>
		<b>9, 871, 845, 309. 87</b>	<b>10, 628, 062, 574. 38</b>

2008 1—12

		<b>33,886,892,669.30</b>	<b>29,588,446,202.11</b>
		33,886,892,669.30	29,588,446,202.11
		<b>33,235,589,189.39</b>	<b>28,957,525,233.05</b>
		31,833,624,125.69	27,729,030,503.25
		265,367,088.68	280,224,693.52
		885,095,932.55	724,301,163.73
		75,747,935.40	106,410,528.30
		33,037,212.56	32,880,551.85
		142,716,894.51	84,677,792.40
		-46,581,922.15	15,990,240.37
		160,287,924.36	241,775,488.18
		35,236,155.56	2,309,850.77
	" "	<b>765,009,482.12</b>	<b>888,686,697.61</b>
		58,966,587.85	46,693,092.67
		6,959,204.91	1,633,541.97
		4,274,465.39	186,939.52
		<b>817,016,865.06</b>	<b>933,746,248.31</b>
		126,851,395.93	162,746,608.74
		<b>690,165,469.13</b>	<b>770,999,639.57</b>
		<b>623,111,127.02</b>	<b>711,134,707.65</b>
		67,054,342.11	59,864,931.92
		0.50	0.62
		0.50	0.62

2008 1—12

		<b>20,826,262,135.10</b>	<b>21,648,558,288.20</b>
		20,138,587,775.33	20,995,065,345.97
		104,724,856.56	19,818,918.02
		452,884,790.21	520,263,005.65
		32,890,316.78	31,825,692.41
		4,540,455.56	32,811,511.75
		97,870,388.21	60,966,173.09
		-46,581,922.15	15,990,240.37
		716,819,613.98	270,281,782.95
		17,440,079.33	-17,936,810.75
		<b>665,001,244.28</b>	<b>274,079,664.63</b>
		582,802.32	412,463.76
		449.96	2,673.75
		<b>665,583,596.64</b>	<b>274,489,454.64</b>
		-5,862,275.96	32,271,516.39
		<b>671,445,872.60</b>	<b>242,217,938.25</b>

2008 1—12

		39,577,472,342.92	32,291,382,533.19
		652,235,407.53	574,692,158.26
		676,904,932.27	369,265,453.23
		<b>40,906,612,682.72</b>	<b>33,235,340,144.68</b>
		37,925,544,613.46	32,345,106,664.06
		477,537,864.39	348,719,835.19
		608,195,945.74	299,143,248.84
		1,154,991,839.80	765,871,407.50
		40,166,270,263.39	33,758,841,155.59
		740,342,419.33	-523,501,010.91
		93,053,001.25	280,975,876.14
		124,772,646.03	215,790,533.05
		6,691,997.25	24,687,235.45
		224,517,644.53	521,453,644.64
		828,018,230.59	1,189,926,971.56
		307,406,637.65	637,352,952.69
		29,466,240.91	124,521.52
		1,164,891,109.15	1,827,404,445.77
		-940,373,464.62	-1,305,950,801.13
		21,477,867.78	1,500,457,934.94
		21,477,867.78	26,160,951.96
		4,093,925,829.93	7,070,855,694.85
			1,000,000,000.00
		4,115,403,697.71	9,571,313,629.79
		4,546,425,151.87	5,825,133,548.67
		500,965,162.39	559,622,764.06
		90,016,830.96	3,834,533.04
		5,047,390,314.26	6,384,756,312.73
		-931,986,616.55	3,186,557,317.06
		205,081,322.51	168,067,150.94
		-926,936,339.33	1,525,172,655.96
		2,199,218,678.78	674,046,022.82
		1,272,282,339.45	2,199,218,678.78

2008 1—12

		24, 296, 611, 331. 77	22, 727, 603, 011. 81
		420, 826, 775. 75	438, 283, 445. 01
		472, 339, 993. 64	530, 504, 449. 23
		25, 189, 778, 101. 16	23, 696, 390, 906. 05
		22, 352, 243, 887. 50	22, 645, 336, 570. 58
		213, 426, 583. 44	135, 684, 946. 49
		200, 692, 381. 62	59, 063, 744. 56
		1, 074, 716, 880. 62	1, 743, 111, 781. 71
		23, 841, 079, 733. 18	24, 583, 197, 043. 34
		1, 348, 698, 367. 98	- 886, 806, 137. 29
		18, 161, 881. 13	480, 091, 536. 65
		676, 017, 397. 67	276, 355, 971. 38
		493, 589. 71	15, 743, 196. 67
		694, 672, 868. 51	772, 190, 704. 70
		9, 867, 449. 98	361, 153, 068. 08
		1, 079, 683, 570. 00	1, 283, 982, 196. 43
			7, 595, 142. 93
		1, 089, 551, 019. 98	1, 652, 730, 407. 44
		- 394, 878, 151. 47	- 880, 539, 702. 74
			1, 474, 296, 982. 98
		2, 215, 139, 513. 45	4, 473, 439, 250. 68
			1, 000, 000, 000. 00
		2, 215, 139, 513. 45	6, 947, 736, 233. 66
		3, 474, 936, 476. 59	4, 364, 591, 726. 14
		345, 712, 946. 89	455, 012, 146. 64
		3, 820, 649, 423. 48	4, 819, 603, 872. 78
		- 1, 605, 509, 910. 03	2, 128, 132, 360. 88
		171, 776, 696. 79	150, 705, 469. 42
		- 479, 912, 996. 73	511, 491, 990. 27
		903, 613, 114. 22	392, 121, 123. 95
		423, 700, 117. 49	903, 613, 114. 22

2008 1—12

	690,663,809.00	2,879,930,833.39		184,698,781.96		1,130,343,091.65	2,979,782.94	268,487,041.64	5,157,103,340.58
	690,663,809.00	2,879,930,833.39		184,698,781.96		1,130,343,091.65	2,979,782.94	268,487,041.64	5,157,103,340.58
	552,531,047.00	-736,844,165.15		67,144,587.26		348,767,397.06	3,402,175.06	-2,835,852.25	232,165,188.98
						623,111,127.02		67,054,342.11	690,165,469.13
		-184,313,129.35					3,402,175.06	-3,438,132.40	-184,349,086.69
1		-251,148,790.65						-6,983,615.30	-258,132,405.95
2		22,287,561.26						-656,851.36	21,630,709.90
3		44,548,100.04							44,548,100.04
4							3,402,175.06	4,202,334.26	7,604,509.32
		-184,313,129.35				623,111,127.02	3,402,175.06	63,616,209.71	505,816,382.44
		11.20						22,873,769.00	22,873,780.20
1		11.20						22,873,769.00	22,873,780.20
2									
3									
				67,144,587.26		-274,343,729.96		-89,325,830.96	-296,524,973.66
1				67,144,587.26		-67,144,587.26			
2						-207,199,142.70		-89,325,830.96	-296,524,973.66
3									
	552,531,047.00	-552,531,047.00							
1	552,531,047.00	-552,531,047.00							
2									
3									
4									
	1,243,194,856.00	2,143,086,668.24		251,843,369.22		1,479,110,488.71	6,381,958.00	265,651,189.39	5,389,268,529.56

: :

	617,600,000.00	1,262,238,225.81		160,476,988.13		752,230,177.83	-812,815.76	169,742,075.65	2,961,474,651.66
	617,600,000.00	1,262,238,225.81		160,476,988.13		752,230,177.83	-812,815.76	169,742,075.65	2,961,474,651.66
	73,063,809.00	1,617,692,607.58		24,221,793.83		378,112,913.82	3,792,598.70	98,744,965.99	2,195,628,688.92
						711,134,707.65		59,864,931.92	770,999,639.57
		216,459,433.60					3,792,598.70	8,411,158.88	228,663,191.18
1		196,941,065.65						8,308,898.19	205,249,963.84
2		19,514,743.86							19,514,743.86
3									
4		3,624.09					3,792,598.70	102,260.69	3,898,483.48
		216,459,433.60				711,134,707.65	3,792,598.70	68,276,090.80	999,662,830.75
	73,063,809.00	1,401,233,173.98						38,581,817.39	1,512,878,800.37
1	73,063,809.00	1,401,233,173.98						38,581,817.39	1,512,878,800.37
2									
3									
				24,221,793.83		-333,021,793.83		-8,112,942.20	-316,912,942.20
1				24,221,793.83		-24,221,793.83			
2									
3						-308,800,000.00		-8,112,942.20	-316,912,942.20
4									
1									
2									
3									
4									
	690,663,809.00	2,879,930,833.39		184,698,781.96		1,130,343,091.65	2,979,782.94	268,487,041.64	5,157,103,340.58



2008 1—12

	690,663,809.00	2,688,486,737.60		184,698,781.96	11,322,730.79	3,575,172,059.35
	690,663,809.00	2,688,486,737.60		184,698,781.96	11,322,730.79	3,575,172,059.35
	552,531,047.00	-591,686,327.54		67,144,587.26	397,102,142.64	425,091,449.36
					671,445,872.60	671,445,872.60
		-39,155,280.54				-39,155,280.54
1		-90,100,000.00				-90,100,000.00
2		34,756,719.46				34,756,719.46
3		16,188,000.00				16,188,000.00
4						
		-39,155,280.54			671,445,872.60	632,290,592.06
1						
2						
3						
				67,144,587.26	-274,343,729.96	-207,199,142.70
1				67,144,587.26	-67,144,587.26	
2					-207,199,142.70	-207,199,142.70
3						
	552,531,047.00	-552,531,047.00				
1	552,531,047.00	-552,531,047.00				
2						
3						
4						
	1,243,194,856.00	2,096,800,410.06		251,843,369.22	408,424,873.43	4,000,263,508.71

	617,600,000.00	1,248,181,563.62		160,476,988.13	102,126,586.37	2,128,385,138.12
	617,600,000.00	1,248,181,563.62		160,476,988.13	102,126,586.37	2,128,385,138.12
	73,063,809.00	1,440,305,173.98		24,221,793.83	-90,803,855.58	1,446,786,921.23
					242,217,938.25	242,217,938.25
		39,072,000.00				39,072,000.00
1		39,072,000.00				39,072,000.00
2						
3						
4						
		39,072,000.00			242,217,938.25	281,289,938.25
	73,063,809.00	1,401,233,173.98				1,474,296,982.98
1	73,063,809.00	1,401,233,173.98				1,474,296,982.98
2						
3						
				24,221,793.83	-333,021,793.83	-308,800,000.00
1				24,221,793.83	-24,221,793.83	
2					-308,800,000.00	-308,800,000.00
3						
1						
2						
3						
4						
	690,663,809.00	2,688,486,737.60		184,698,781.96	11,322,730.79	3,575,172,059.35

1  
2  
3

2009 4 13



2008

2009 GF 020022

Ascenda Certified Public Accountants

2009 GF 020022

---

2008 12 31

2008

2006 2 15

1

2

3

2006 2 15

2008 12 31

2008

2009 4 13



100%

2007 1 1

" [2006]3 "

2007 1 1

—

1 1 12 31

C&D Canada Import&Export Inc.

C&D USA INC.

1.

2.

INC. C&D Canada Import&Export Inc.

C&D USA

" "

1.

1



2

	1	1 2	2 3	3 4	4 5	5
	5%	10%	30%	50%	80%	100%

3

4

"

"

"

"

2.

1.

1

2

3

2.

---

		%	%
	10-50	0-10	1.80-10.00
	3-12	0-10	7.50-33.33
	4-10	0-10	9.00-25.00
	3-10	0-10	9.00-33.33
		-	-
	5-10	0-10	9.00-20.00



---

		-

---

1

2

3

3

1.

13

14 —

10

80

2.

50

1.

1

2

3

4

5

2.

A



B

3.

4.

1

1.

2.

1.

2.

*1		3-5%
		20%
		0-17%
		7% 5%
		3% 4%
		1% 2%
1	" 2003 31 "	

2

18%

2007 3 16 "

2008 1 1 2007 12 26

2007 39 2008 1 1

5 15 2008 18

2009 20 2010 22% 2011 24 2012 25

75%

1.2% 12%

1.2% 12%

20%

20%

[2004]100

2008 12 31

1							
	2,000.00			2,000.00	95.00%	5.00%	
	5,000.00			5,226.00	98.79%	1.21%	
	1,305.00			1,363.16	90.00%	10.00%	
	1,060.00			1,086.53	80.00%	20.00%	
	5,000.00			5,000.00	95.00%	5.00%	
	500.00			500.00	95.00%	5.00%	
	500.00			5,000.00	95.00%	5.00%	
	1,600.00			1,600.00	95.00%	5.00%	
	500.00			500.00	96.00%	4.00%	
	1,000.00			1,060.22	95.00%	5.00%	
	1,000.00			1,000.00	95.00%	5.00%	
	1,600.00			1,600.00	95.00%	5.00%	
	HKD312.00			3,412.49	100.00%	-	
C&D CANADA IMPORT&EXPORT INC.	USD100.00			312.85	100.00%	-	
C&D USA INC.	USD20.00			68.46	100.00%	-	
	1,100.00			759.51	54.55%	-	

	1,000.00			1,000.00	-	100.00%	
	10,000.00			10,000.00	95.00%	5.00%	
	800.00			800.00	-	100.00%	
	1,000.00			1,000.00	-	100.00%	
	1,000.00			1,075.00	-	100.00%	
	1,000.00			1,000.00	-	100.00%	
	1,000.00			1,000.00	-	100.00%	
	500.00			430.00	-	80.00%	
	1,500.00			1,300.00	-	80.00%	
	500.00			500.00	-	100.00%	
	5,000.00			5,000.00	-	100.00%	
	20,000.00			20,000.00	97.50%	2.50%	
	10,000.00			10,000.00	5.00%	95.00%	
	5,000.00			5,000.00	5.00%	95.00%	
	5,000.00			5,000.00	5.00%	95.00%	
	10,000.00			10,000.00	5.00%	95.00%	
	10,000.00			10,000.00	5.00%	95.00%	
	30,000.00			30,000.00	95.00%	5.00%	
	500.00			500.00	-	100.00%	
	500.00			500.00	-	100.00%	
	500.00			500.00	-	100.00%	
	500.00			500.00	-	100.00%	
	500.00			500.00	-	100.00%	
	500.00			500.00	-	100.00%	
	500.00			500.00	-	100.00%	
	500.00			500.00	-	100.00%	
	600.00			600.00	-	100.00%	
	200.00			200.00	-	100.00%	

	500.00			500.00	-	100.00%	
	100.00			100.00	-	100.00%	
	30.00			30.00	-	100.00%	
	50.00			50.00	-	100.00%	
	HKD80.00			HKD80.00	-	100.00%	
	600.00			600.00	-	100.00%	
	300.00			300.00	-	100.00%	
	300.00			300.00	-	100.00%	
2							
	20,000.00			20,000.00	95.00%	5.00%	
	260.00			260.00	-	100.00%	
	550.00			550.00	-	100.00%	
	200.00			200.00	-	100.00%	
	300.00			300.00	-	100.00%	
	600.00			600.00	-	100.00%	
	1,000.00			1,218.73	-	100.00%	
	300.00			300.00	-	100.00%	
	200.00			200.00	-	100.00%	
	1,125.00			1,125.00	-	100.00%	
	2,000.00			2,000.00	-	100.00%	
	1,700.00			1,884.13	-	70.00%	
	1,000.00			1,000.00	-	50.00%	
3							
	100,000.00			107,047.87	95.00%	-	
	2,000.00			2,000.00	-	100.00%	
	800.00			800.00	-	100.00%	

	2,000.00			2,000.00	-	100.00%	
	800.00			800.00	-	100.00%	
	3,000.00			3,000.00	-	100.00%	
	USD150.00			USD127.50	-	85.00%	
	500.00			410.00	-	70.00%	
	100.00			70.00	-	70.00%	
	4,150.00			4,214.63	-	80.00%	
	1,000.00			1,000.00	-	100.00%	
	2,000.00			1,400.00	-	70.00%	
	2,000.00			3,200.00	-	80.00%	
	2,000.00			2,000.00	-	100.00%	
	3,000.00			1,530.00	51.00%	-	
	1,000.00			510.00	51.00%	-	
4							
	15,000.00			136,002.97	95.00%	-	
	4,800.00			4,800.00	-	100.00%	
	300.00			300.00	-	100.00%	
	150.00			172.30	-	100.00%	
	200.00			102.00	-	51.00%	
	50.00			25.50	-	51.00%	
5							
	800.00			800.00	95.00%	5.00%	
	400.00			280.00	70.00%	-	



	300.00			300.00	-	100.00%	
	2,972.59			1,991.64	-	67.00%	
	1,660.00			1,162.00	-	70.00%	
	10,000.00			10,000.00	20.00%	80.00%	
	5,000.00			5,000.00	100.00%	-	
	USD3,590.00			USD3,590.00	93.036%	6.964%	

1

2

3

4

5

6

7

8

1

C&amp;D USA INC.

2

3

4

C&D USA INC.		368,606.58	-317,073.87
		4,533,294.16	-466,705.84
		49,969,934.80	-30,065.20
		4,996,159.05	-3,840.95
		4,934,604.26	-65,395.74
		4,989,244.34	-10,755.66
		5,001,932.54	1,932.54
		4,992,626.50	-7,373.50
		20,000,000.00	-
		5,455,005.39	-4,544,994.61
		20,107,520.84	-319,509.25
		12,342,964.26	1,795,338.70

1

2008 1 18

60%

2400

20% 800 2008 1 26

80% 2008 1 26

2

2008 1 26 32,000,000.00

3

	76,049,355.77
	55,622,325.68
	-
	-319,509.25
	-38,113,880.53

44

1

			50.00%	50.00%	266,768,141.70	-	-
			50.00%	50.00%	233,001,602.79	1,763,929.69	-6,998,397.21
			50.00%	50.00%	3,430,226.95	187,463,135.08	129,320.07

2

			40%	40%	313,677,962.72	-	-1,287,494.39
			20%	20%	1,177,348,973.44	15,362,241.75	-34,787,477.27
			30%	30%	145,537,246.56	277,057,350.37	3,277,695.35
			20%	20%	488,893,429.83	2,805,017,290.57	152,976,510.93
			40%	40%	50,289,185.77	7,234,778.89	185,784.77
			20%	20%	9,514,914.02	-	-485,085.98
			21%	21%	547,016,476.05	1,199,228,859.60	56,126,062.30
		LED	36.55%	36.55%	171,436,547.86	425,141,159.40	11,005,321.59
			25%	25%	18,566,015.10	-	8,504,960.77
			35%	35%	252,182.03	60,303.38	-747,817.97
			30%	30%	285,381.69	2,267,195.90	193,313.86

1

1

	-	-	181,741.54	-	-	258,928.71
	-	-	-	147.00	7.4121	1,089.58
	-	-	1,268,745,232.24	-	-	2,198,959,750.07
	8,513,704.95	6.8346	58,187,767.87	12,938,121.58	7.3046	94,507,802.92
	1,009,841.24	0.88189	890,568.89	1,669,228.30	0.9364	1,563,065.38

	353,903.60	9.65900	3,418,354.89	223,950.53	10.6669	2,388,857.94
	35,961,219.04	0.07565	2,720,466.22	29,581,889.17	0.06406	1,895,015.82
	298,281.62	5.61460	1,674,731.98	99,517.00	7.4121	737,629.96
	93,467.66	9.87980	923,441.78	3,716.15	14.5807	54,184.07
	23,828.13	4.7135	112,313.88	1.18	6.4036	7.56
	1,278.84	6.46240	8,264.39	0.06	6.4855	0.39
	20,413.18	4.75300	97,023.84	-	-	-
	-	-	231,201,914.88	-	-	157,646,914.24
			1,500,128,888.66	-	-	2,356,865,593.02

2 36.35%

3 231,201,914.88

4

2

1

	36,268,974.09	85,643,839.67
	128,840.00	-
	36,397,814.09	85,643,839.67

2

3

3

1

	138,906,855.15	499,113,879.16
	21,061,246.93	25,374,249.39
	159,968,102.08	524,488,128.55

2 2008 12 31

3 2008 12 31 5,441,293.68

4 2,277,637.87 1.42%

5 69.50%

4

1

	221,243,403.21	33.52%	12,007,220.52	209,236,182.69
	-	-	-	-
	438,836,692.24	66.48%	23,823,211.56	415,013,480.68
	660,080,095.45	100.00%	35,830,432.08	624,249,663.37
	218,857,585.17	34.26%	8,837,050.62	210,020,534.55
	1,549,824.14	0.24%	1,505,012.07	44,812.07
	418,459,398.23	65.50%	23,833,306.78	394,626,091.45
	638,866,807.54	100.00%	34,175,369.47	604,691,438.07

500

500

2

1	633,617,515.04	95.99%	31,130,468.80	602,487,046.24
1-2	21,587,570.84	3.27%	1,855,582.47	19,731,988.37
2-3	1,489,802.69	0.23%	462,523.59	1,027,279.10
3-4	1,831,964.78	0.28%	1,053,243.54	778,721.24
4-5	1,123,142.10	0.17%	898,513.68	224,628.42
5	430,100.00	0.07%	430,100.00	-
	660,080,095.45	100.00%	35,830,432.08	624,249,663.37
1	616,262,318.97	96.46%	28,139,918.00	588,122,400.97

1-2	15,166,325.15	2.37%	2,829,293.16	12,337,031.99
2-3	4,511,734.76	0.71%	1,545,685.98	2,966,048.78
3-4	2,274,668.66	0.36%	1,137,334.33	1,137,334.33
4-5	643,110.00	0.10%	514,488.00	128,622.00
5	8,650.00	-	8,650.00	-
	638,866,807.54	100.00%	34,175,369.47	604,691,438.07

其中外币列示如下：

	9,157,916.64	6.8346	62,590,697.04	4,357,544.76	7.3046	31,830,121.45
	160,932.89	5.6146	903,573.82	-	-	-
	-	-	63,494,270.86	4,357,544.76	7.3046	31,830,121.45

3

	14,704,425.79	1	2.23%	-	
	14,375,081.45	1	2.18%	19,661,392.00	
THE EXPORTING IMPORT COMPANY OF the MINIL	12,726,344.11	1	1.93%	-	
BATTERY TEAM GROUP	10,884,314.84	1	1.65%	-8,419,546.83	
	10,823,491.91	1	1.64%	-	
	63,513,658.10	-	9.62%	11,241,845.17	
2008 12 31				63,513,658.10	
					9.62%

4

	8,837,050.62	3,170,169.90	-	-	12,007,220.52
	1,505,012.07	-	1,505,012.07	-	-
	23,833,306.78	649,635.03	-	659,730.25	23,823,211.56
	34,175,369.47	3,819,804.93	1,505,012.07	659,730.25	35,830,432.08





	49,800,458.75		83,016,959.00
	401,250,441.64	-	176,630,796.89

3

	22,965,464.89	1-2	
	12,000,000.00	4-5	
	8,869,729.00	1-2	
	7,996,107.25	3-4	
	7,336,298.00	1-2	
HYUNDAI HEAVY INDUSTRIES CO.,LTD.	5,229,298.36	1-2	
	1,101,373.32	1-2	
SAN WOO ENTERPRISE CO., LTD.	1,086,812.70	1-2	
	66,585,083.52	-	-

4

5% 5%

272,500.00

0.01%

5

6

3,312,500.00

7

7,843,140.00

8

1

	160,042,370.29	51.04%	-	160,042,370.29
	4,681,296.05	1.49%	3,869,466.71	811,829.34
	148,851,171.41	47.47%	3,618,754.24	145,232,417.17
	313,574,837.75	100.00%	7,488,220.95	306,086,616.80

	212,846,714.62	59.33%	433,794.36	212,412,920.26
	4,621,813.64	1.29%	3,809,855.82	811,957.82
	141,243,469.14	39.38%	2,507,851.42	138,735,617.72
	358,711,997.40	100.00%	6,751,501.60	351,960,495.80

500

500

2

1	263,108,696.81	83.91%	2,051,676.84	261,057,019.97
1-2	28,582,628.25	9.12%	4,468,124.62	24,114,503.63
2-3	11,364,995.76	3.62%	198,105.29	11,166,890.47
3-4	2,213,958.25	0.71%	95,335.75	2,118,622.50
4-5	5,789,546.90	1.85%	629,978.45	5,159,568.45
5	2,515,011.78	0.80%	45,000.00	2,470,011.78
	313,574,837.75	100.00%	7,488,220.95	306,086,616.80
1	336,819,239.02	93.90%	5,983,446.37	330,835,792.65
1-2	10,485,654.91	2.92%	82,891.93	10,402,762.98
2-3	1,662,914.54	0.46%	158,030.48	1,504,884.06
3-4	6,835,052.79	1.91%	482,132.82	6,352,919.97
4-5	1,639,151.54	0.46%	-	1,639,151.54
5	1,269,984.60	0.35%	45,000.00	1,224,984.60
	358,711,997.40	100.00%	6,751,501.60	351,960,495.80

注：年末其他应收款余额中无外币金额。

3

5

	109,700,335.40		1	34.98%	174,494,534.26
	54,484,266.04		1	17.38%	14,676,293.14
	13,879,721.55		1	4.43%	-

	9,384,717.35		1	2.99%	-
	7,824,226.14		1-2	2.50%	-
	195,273,266.48	-	-	62.27%	189,170,827.40
2008 12 31					195,273,266.48
		62.27%			

4

	433,794.36	-	433,794.36	-	-
	3,809,855.82	59,765.92	-	155.03	3,869,466.71
	2,507,851.42	1,110,902.82	-	-	3,618,754.24
	6,751,501.60	1,170,668.74	433,794.36	155.03	7,488,220.95
5 2008 12 31				5%	5%
			50,000.00		

0.02%

9

1

	3,137,315,750.07	2,618,482,650.86
	1,040,146,953.28	137,768,880.70
	1,585,869,992.58	1,882,622,637.90
	5,513,137.08	7,688,059.48
	16,258,787.00	12,037,533.79
	-	39,967,497.26
	1,475,637.41	-
	-	284,741.32
	2,352,081.66	740,609.91
	3,665,596.68	1,931,591.25
	6,951,264.33	148,995.48
	99,475.15	106,577.21

	887,884.81	380,170.70
	139,562,452.27	56,783,758.31
	5,660,974,107.78	4,645,376,187.55

2

	56,783,758.31	139,562,452.27	-	56,783,758.31	139,562,452.27
	56,783,758.31	139,562,452.27	-	56,783,758.31	139,562,452.27

1

2 56,783,758.31

3 334,888,985.33

4

A-05	132,030,000.00	-	132,030,000.00	-	
	68,000,000.00	-	38,236,702.07	29,763,297.93	
	200,030,000.00	-	170,266,702.07	29,763,297.93	-

10

112,805,998.58

13

11

1

	92,861,468.42	357,984,933.46
	92,861,468.42	357,984,933.46
	-	-
	92,861,468.42	357,984,933.46

2

3

12

1

	25,000,000.00	35,000,000.00

2

13

1

	241,659,128.13	91,728,682.27
	26,539,971.02	12,084,461.43
	215,119,157.11	79,644,220.84
	112,805,998.58	34,695,197.27
	102,313,158.53	44,949,023.57
	131,555,228.76	

18,749,230.18

2

5

	66,498,012.17	-
	4,196,078.40	2,743,692.35
	10,561,030.41	-
	5,210,443.76	-
	4,728,914.37	6,685,714.29
	91,194,479.11	9,429,406.64

3

14

1

*1	113,271,162.58	148,357,392.65	9,933,097.94	251,695,457.29
*2	540,710,692.62	177,705,681.64	11,247,651.21	707,168,723.05
*3	105,890,291.97	-	50,000,000.00	55,890,291.97
	759,872,147.17	326,063,074.29	71,180,749.15	1,014,754,472.31
	-	-	-	-
	759,872,147.17	326,063,074.29	71,180,749.15	1,014,754,472.31

1

148,357,392.65

120,000,000.00		1,745,925.00
26,611,467.65		9,933,097.94
3,398,957.52		
6,534,140.42		
2	177,705,681.64	66,905,101.64
	20,000,000.00	
2,000,000.00		350,000.00
	30,000,000.00	8,450,580.00
		50,000,000.00
	11,247,651.21	11,247,651.21
3		
2		

*1	48,000,000.00	48,000,000.00	-	-	48,000,000.00	-	-
	1,400,000.00	1,400,000.00	-	-	1,400,000.00	14%	14%
*2	864,000.00	4,250,119.46	-	-	4,250,119.46	40%	40%
*3	238,296.59	238,296.59	-	-	238,296.59	20%	20%
*4	2,001,875.92	2,001,875.92	-	-	2,001,875.92	45.50%	-
*5	50,000,000.00	50,000,000.00	-	50,000,000.00	-	20%	20%
	102,504,172.51	105,890,291.97	-	50,000,000.00	55,890,291.97	-	-

1

60% 2008 12 31

80%

6000

2

2007

3

4

5 2002

1 30

2,925,000.00 2008

2008 12 31

20%

3

	30.00%	30.00%	57,866,620.54	-	-14,205,446.58	-
	20.00%	20.00%	2,000,000.00	268,000,000.00	-34,530,205.31	-
*1	40.00%	40.00%	16,800,000.00	97,200,000.00	11,471,185.09	-
*2	40.00%	40.00%	20,000,000.00	-	115,674.31	-
*3	20.00%	20.00%	2,000,000.00	-	-97,017.20	-
*4	20.00%	20.00%	50,000,000.00	-	47,778,685.97	-
*5	50.00%	50.00%	100,000,000.00	33,340,000.00	44,070.85	-
*6	50.00%	50.00%	120,000,000.00	-	-3,499,198.60	-
*7	50.00%	50.00%	1,745,925.00	-	64,660.04	-
*8	50.00%	50.00%	5,000,000.00	-	-3,831,987.50	1,168,012.50
	30.00%	30.00%	303,000.00	-	-217,385.50	-
	25.00%	25.00%	3,000,000.00	-	2,061,829.81	-
*9	21.00%	21.00%	1,440,000.00	30,578,293.96	132,243,772.98	49,388,606.97
	36.55%	36.55%	12,575,393.00	28,479,152.36	45,857,043.41	24,251,530.53
*9	35.00%	35.00%	350,000.00	-	-261,736.29	-
	-	-	393,080,938.54	457,597,446.32	182,993,945.48	74,808,150.00





31 50% 2008 12  
 " 2008  
 176 "

6 2007 7 30 2007 14  
 2008 4 30

12,000 50%  
 7 2007 12 10 2007 23  
 2008

50% 50 25 50%  
 8 2008  
 6,534,140.42

9 2008  
 8,450,580.00 350,000.00  
 4

15

	770,983,115.61	536,702,673.57	-	1,307,685,789.18
1	720,225,175.96	525,303,384.51	-	1,245,528,560.47
2	50,757,939.65	11,399,289.06	-	62,157,228.71
	143,072,039.33	28,820,232.89	-	171,892,272.22
1	138,562,532.98	26,586,735.98	-	165,149,268.96
2	4,509,506.35	2,233,496.91	-	6,743,003.26
	1,060,000.00	-	-	1,060,000.00
1	1,060,000.00	-	-	1,060,000.00
2	-	-	-	-
	626,851,076.28	-	-	1,134,733,516.96
1	580,602,642.98	-	-	1,079,319,291.51
2	46,248,433.30	-	-	55,414,225.45
1		536,702,673.57		
	33,943,188.35	11,399,289.06		301,064,627.31

2 1,060,000.00  
 1997 8 26 14 48

6,870.90

16

1

	1,683,201,913.73	108,713,022.10	62,459,912.29	1,729,455,023.54
1	1,237,767,502.63	60,962,942.17	44,175,403.69	1,254,555,041.11
2	272,470,129.11	16,996,566.79	7,409,474.34	282,057,221.56
3	91,624,751.72	9,630,241.85	8,468,416.73	92,786,576.84
4	51,161,173.26	17,069,472.35	1,855,197.81	66,375,447.80
5	12,117,221.10	3,555,786.10	477,669.72	15,195,337.48
6	4,804,024.49	295,903.39	-	5,099,927.88
7	13,257,111.42	202,109.45	73,750.00	13,385,470.87
	559,371,532.62	78,724,831.39	17,162,486.01	620,933,878.00
1	293,182,488.87	28,363,166.76	2,789,933.55	318,755,722.08
2	177,220,238.37	26,342,443.94	6,905,316.10	196,657,366.21
3	44,319,839.02	10,926,671.80	5,976,257.01	49,270,253.81
4	30,277,677.75	9,516,378.17	1,015,614.66	38,778,441.26
5	7,594,828.76	2,740,043.19	365,368.48	9,969,503.47
6	4,065,710.02	282,120.49	91,699.71	4,256,130.80
7	2,710,749.83	554,007.04	18,296.50	3,246,460.37
	1,123,830,381.11	-	-	1,108,521,145.54
1	944,585,013.76	-	-	935,799,319.03
2	95,249,890.74	-	-	85,399,855.35
3	47,304,912.70	-	-	43,516,323.03
4	20,883,495.51	-	-	27,597,006.54
5	4,522,392.34	-	-	5,225,834.01
6	738,314.47	-	-	843,797.08
7	10,546,361.59	-	-	10,139,010.50

1 108,713,022.10

10,345,449.00

1,903,993.44

52,726,806.74

17

2

33,943,188.35



	281,055,743.00	-	-	-	-	100.00%
	33,266,996.06	30,686,942.06	129,562.00	-	-	-
	2,397,400.00	-	-	-	-	100.00%
	1,457,030.00	-	307,422.00	-	-	-
	144,017,680.42	-	-	-	-	100.00%
	28,470,089.19	-	-	-	-	100.00%
	119,925,429.70	-	46,996,222.93	-	-	61.14%
	950,000.00	-	90,927,984.48	4,691,126.00	-	45.81%
	15,999,389.25	7,649,450.24	550,500.00	-	-	-
	-	-	12,807,881.70	-	-	51.23%
	3,912,619.00	1,656,138.00	-	-	-	100.00%
	1,391,075.61	1,391,075.61	104,924.40	-	-	-
	-	-	1,132,195.75	-	-	-
	1,131,956.38	-	2,877,921.63	-	-	-
	467,493.00	-	-	-	-	100.00%
	-	-	1,943,988.31	-	-	64.80%
	-	-	266,700,570.45	23,892,363.20	-	66.68%
	-	-	115,029,973.22	14,836,873.67	-	19.17%
	11,343,200.83	11,343,200.83	-	-	-	100.00%
	-	-	434,663,981.64	11,107,970.14	-	54.67%
	645,786,102.44	52,726,806.74	974,173,128.51	54,528,333.01	-	-

1 51.93%

2 52,726,806.74 301,064,627.31

281,055,743.00

2

	-	11,107,970.14	-	-	11,107,970.14
	15,705,036.32	14,859,613.28	-	30,564,649.60	-
	8,056,232.26	15,836,130.94	-	-	23,892,363.20
	-	4,691,126.00	-	-	4,691,126.00
	2,870,066.96	11,966,806.71	-	-	14,836,873.67
	26,631,335.54	58,461,647.07	-	30,564,649.60	54,528,333.01

3

18

1

	692,568,609.33	4,287,687.00	101,959,865.75	594,896,430.58
	4,500,675.00	-	-	4,500,675.00
	27,691,974.10	-	-	27,691,974.10
	5,097,712.57	-	-	5,097,712.57
	112,195,462.10	-	-	112,195,462.10
	11,399,289.06	-	11,399,289.06	-
	6,813,445.75	-	-	6,813,445.75
	9,079,508.50	-	-	9,079,508.50
	219,677.53	-	-	219,677.53
	6,898,609.12	-	-	6,898,609.12
	87,922,889.69	2,637,687.00	90,560,576.69	-
	55,000,000.00	1,650,000.00	-	56,650,000.00
	365,749,365.91	-	-	365,749,365.91
	70,837,967.90	14,519,493.87	4,733,843.07	80,623,618.70
1	562,584.37	97,840.76	-	660,425.13
2	553,839.48	-	-	553,839.48
3	1,214,808.99	127,442.84	-	1,342,251.83
	2,019,086.54	2,244,792.44	-	4,263,878.98
	990,241.27	138,173.20	1,128,414.47	-
	409,743.30	140,483.42	-	550,226.72
	1,119,409.56	186,602.52	-	1,306,012.08
	132,366.31	46,954.27	-	179,320.58
	1,213,413.18	121,608.57	-	1,335,021.75
	1,758,457.80	1,846,970.80	3,605,428.60	-
	1,260,416.67	1,440,861.35	-	2,701,278.02
	59,603,600.43	8,127,763.70	-	67,731,364.13
	621,730,641.43	-	-	514,272,811.88
1	3,938,090.63	-	-	3,840,249.87
2	27,138,134.62	-	-	27,138,134.62
3	3,882,903.58	-	-	3,755,460.74
	110,176,375.56	-	-	107,931,583.12

	10,409,047.79	-	-	-
	6,403,702.45	-	-	6,263,219.03
	7,960,098.94	-	-	7,773,496.42
	87,311.22	-	-	40,356.95
	5,685,195.94	-	-	5,563,587.37
	86,164,431.89	-	-	-
	53,739,583.33	-	-	53,948,721.98
	306,145,765.48	-	-	298,018,001.78

1 4,287,687.00

2 101,959,865.75

2

19

		140,455,792.42	140,455,792.42	-	-	140,455,792.42
		31,451,338.40	31,451,338.40	-	-	31,451,338.40
		721,761.21	721,761.21	-	-	721,761.21
*1		24,864,401.76	24,864,401.76	-	-	24,864,401.76
		1,020,202.24	1,020,202.24	-	-	1,020,202.24
	-	198,513,496.03	198,513,496.03	-	-	198,513,496.03
*2	-	-	31,451,338.40	-	-	31,451,338.40
	-	-	167,062,157.63	-	-	167,062,157.63

1

2

2009

2008 12 31

20

	1,167,017.63	1,167,017.63	282,144.26
	3,579,291.81	2,149,831.81	2,711,277.81
	26,472,776.92	18,127,841.55	8,707,851.95
	1,386,042.00	740,868.86	163,274.50
	32,605,128.36	22,185,559.85	11,864,548.52
	86.99%		

21

	211,759,541.18	42,694,282.98	129,579,679.70	23,592,798.23
	61,160,944.65	12,232,188.93	36,554,863.33	6,579,875.40
	31,127,307.48	6,225,461.50	-	-
	19,037,242.18	3,807,448.44	38,761,403.11	6,977,052.56
	6,619,092.36	1,455,383.65	8,821,275.72	1,587,829.63
	3,576,397.36	894,099.34	-	-
	-	-	194,225.00	34,960.50
	-	-	1,500,000.00	270,000.00
	13,753.80	3,438.45	33,620.39	6,051.67
	333,294,279.01	67,312,303.29	215,445,067.25	39,048,567.99
	72.38%			

22

	40,926,871.07	4,990,473.67	1,938,806.43	659,885.28	43,318,653.03
	56,783,758.31	139,562,452.27	-	56,783,758.31	139,562,452.27
	1,060,000.00	-	-	-	1,060,000.00
	31,451,338.40	-	-	-	31,451,338.40
	130,221,967.78	144,552,925.94	1,938,806.43	57,443,643.59	215,392,443.70

23

	68,000,000.00	-	38,236,702.07	29,763,297.93	

24

1

		300,000,000.00	146,092,000.00
*1		329,403,040.00	261,944,840.00
*2		370,000,000.00	14,573,169.81
*3		87,771,018.56	919,012,130.69
		1,087,174,058.56	1,341,622,140.50
1	329,403,040.00		276,403,040.00

20,000,000.00

30,000,000.00

3,000,000.00

2	370,000,000.00		
3	87,771,018.56		32,172,390.04
22,298,115.66		20,762,522.07	12,537,990.79
2			
3			

	12,211,154.75	6.8346	83,458,358.25

25

	-	194,225.00



26

1

	1,552,394,088.70	696,426,010.61
	45,376,420.68	145,105,078.01
	1,597,770,509.38	841,531,088.62
1	422,894,702.39	282,929,991.55

139,964,710.84

2

665,887,340.22

2

3

27

1 2008 12 31

1

	15,971,149.79	2007		
	14,827,334.60	2006		
	2,180,659.90	2007		
	1,440,000.00	2007		
NANOTEC INTERNATIONAL CO., LTD	1,322,958.64	2006		
	35,742,102.93	-	-	-

2 2008 12 31

5% 5%

1,635,820.53

0.10%

3

	72,353,818.85	6.8346	494,509,410.34	73,977,749.29	7.3046	540,377,867.43
	3,200,215.99	9.65900	30,910,886.26	-	-	-
	871,690.04	0.88189	768,734.73	-	-	-
	3,222.00	5.6146	18,090.24	-	-	-

	104,591,710.91	0.07565	7,912,362.93	-	-	-
	45,792.56	6.4624	295,929.84	-	-	-
	6,547.80	4.7530	31,121.69	-	-	-
	732.14	4.7135	3,450.94	-	-	-
	35,969.55	9.8798	355,372.00	-	-	-
	-	-	534,805,358.97	-	-	540,377,867.43

28

1 2008 12 31

MAERSK SHIPPING SINGAPORE PTE. LTD.	474,784,039.18	2007	2008	
Onchan Navigation Limited	150,376,600.00	2007	2008	
FULIM INCORPORATED	14,166,739.09	2007	2008	
AZAREY INTERNACIONAL S.L.	3,090,798.57	2007	2008	
	642,418,176.84	-	-	-

2 2008 12 31

5% 5%

445,140.00

0.02%

2,957,402.50

0.13%

3

	152,811,708.17	6.8346	1,044,406,900.65	185,443,374.08	7.3046
	308.96	9.659	2,984.29	25,087.18	10.6669
	-	-	1,044,409,884.94	-	-
					1,354,857,272.72

29

1

	148,919,443.22	397,152,072.58	420,469,292.66	125,602,223.14
	598.12	13,388,178.92	13,360,578.94	28,198.10
	34,498.12	27,302,850.57	27,337,348.75	-0.06

	7,252.00	12,216,644.56	12,214,872.56	9,024.00
	1,649,515.70	4,160,734.42	4,155,771.48	1,654,478.64
	-	-	-	-
	-	-	-	-
	-	-	-	-
	-	-	-	-
	150,611,307.16	454,220,481.05	477,537,864.39	127,293,923.82

2

30

	23,568,325.36	-51,078,670.45
	-18,256.48	-1,056.76
	11,021,778.84	20,725,829.43
	-1,306,249.88	33,335,796.35
	45,771,068.69	112,558,822.21
	484,598.80	642,548.92
	212,675.49	1,455,161.87
	-501.33	-
	3,166,572.92	1,540,167.54
	185,040.76	584,720.40
	131,916.64	80,356.88
	-	16,592.39
	-24,681.36	-9,510.90
	3,959.70	2,463,642.46
	5,453.49	4,265.97
	21,390.34	44,208.86
	584,323.66	356,644.92
	15.62	-
	1,116.53	-
	83,808,547.79	122,719,520.09

1

31.71%

2

31

9,569,169.11

32

	6,169.18	606,169.18

33

1

	103,036,300.24	
	112,529,230.43	
	74,539,664.13	
	8,800,000.00	
	298,905,194.80	-

2

	103,036,300.24	2007		-
	79,613,228.84	2007		
	39,808,066.09	2007		
	8,800,000.00	2006		
	3,435,400.00	2007		
	3,092,000.00	2007		
	2,852,831.12	2002		
	2,650,053.00	2006		
	485,967.50	2007		
	243,773,846.79	-	-	-

3

2008 12 31

2,286,360.49

5% 5%

0.40%

103,507,141.66

17.97%

34

	1,628,506,840.00	397,531,040.00	36
	10,000,000.00	10,000,000.00	37
	1,638,506,840.00	407,531,040.00	-

35

	-	1,000,000,000.00
	7,216,790.00	6,760,000.00
	-	1,500,000.00
	16,123,276.59	6,529,676.04
	23,340,066.59	1,014,789,676.04

36

1

	2,737,972,420.00	1,716,150,060.00
	100,000,000.00	248,873,600.00
	46,000,000.00	117,000,000.00
	2,883,972,420.00	2,082,023,660.00
	1,628,506,840.00	397,531,040.00
	1,255,465,580.00	1,684,492,620.00

1

2,737,972,420.00

310,000,000.00

350,000,000.00

1,982,972,420.00

65,000,000.00

30,000,000.00

2

46,000,000.00

2

37

*1	3,204,468.30	2,701,546.15

2	10,000,000.00	10,000,000.00
	13,204,468.30	12,701,546.15
	10,000,000.00	10,000,000.00
	3,204,468.30	2,701,546.15

1

2

38

	-	-	15,648,839.67	2,816,791.14
	31,352,727.89	6,925,361.73	294,256,053.44	52,966,089.62
	5,311,356.43	1,062,271.29	-	-
	240,786.23	42,137.59	535,396.05	96,371.29
	36,904,870.55	8,029,770.61	310,440,289.16	55,879,252.05
	85.63%			

39

1

		%							%
1.	-	-	-	-	-	-	-	-	-
2.	318,400,000	46.10	-	-	205,312,000	-61,760,000	143,552,000	461,952,000	37.16
3.	73,063,809	10.58	-	-	58,451,047	-131,514,856	-73,063,809	-	-
	391,463,809	56.68	-	-	263,763,047	-193,274,856	70,488,191	461,952,000	37.16
1.	299,200,000	43.32	-	-	288,768,000	193,274,856	482,042,856	781,242,856	62.84
	299,200,000	43.32	-	-	288,768,000	193,274,856	482,042,856	781,242,856	62.84
	690,663,809	100.00	-	-	552,531,047	-	552,531,047	1,243,194,856	100.00

1	2008	6	10	2007	2007
	2007			690,663,809	10 8
	552,531,047				" 2008
GF	020017	"			
	2				

2

2009	4	10	461,952,000	-	1,243,194,856
					461,952,000

24

12

6 /

40

*1	2,613,114,477.76	11.20	552,531,047.00	2,060,583,441.96
*2	266,816,355.63	34,767,737.17	219,080,866.52	82,503,226.28
1	33,673,778.06	34,767,737.17	12,480,175.91	55,961,339.32
2	232,981,065.65	-	206,600,690.61	26,380,375.04
3	161,511.92	-	-	161,511.92
	2,879,930,833.39	34,767,748.37	771,611,913.52	2,143,086,668.24

1

11.20

552,531,047.00

2007

39

2

41

	184,698,781.96	67,144,587.26	-	251,843,369.22
	184,698,781.96	67,144,587.26	-	251,843,369.22

10% 67,144,587.26

42

	1,130,343,091.65	752,230,177.83
	-	-
	-	-
	1,130,343,091.65	752,230,177.83
	623,111,127.02	711,134,707.65
	-	-
	1,753,454,218.67	1,463,364,885.48
	67,144,587.26	24,221,793.83
	-	-
	-	-
	1,686,309,631.41	1,439,143,091.65
	-	-
	207,199,142.70	308,800,000.00
	-	-
	1,479,110,488.71	1,130,343,091.65

2008 6 10 2007 2007  
 2007 690,663,809 10 3.00  
 207,199,142.70

43

6,381,958.00

C&D CANADA IMPORT&EXPORT INC. C&D USA INC.

44

		5.00%	76,447,257.98
		5.00%	71,612,916.50
		33.00%	19,244,517.70



		49.00%	18,161,651.69
		49.00%	14,652,862.00
		30.00%	10,456,331.81
		20.00%	9,076,780.46
		30.00%	7,670,014.85
		50.00%	6,171,482.55
		30.00%	5,898,334.88
		45.45%	5,590,505.57
		15.00%	5,287,973.86
		20.00%	4,386,175.95
		20.00%	4,021,504.17
		30.00%	1,973,353.53
		49.00%	1,567,257.11
		30.00%	950,057.51
		30.00%	891,177.72
		49.00%	818,342.80
		20.00%	772,690.75
	-	-	265,651,189.39

" " "

"

45

1

		33,886,892,669.30	29,588,446,202.11
		33,825,395,297.01	29,547,858,427.24
		61,497,372.29	40,587,774.87
		31,833,624,125.69	27,729,030,503.25
		31,816,468,596.59	27,699,394,371.30
		17,155,529.10	29,636,131.95

2

	15,786,317,566.57	15,122,151,032.50	12,403,446,011.76	12,011,001,948.79
	15,967,060,848.55	15,341,254,345.88	14,396,847,665.74	13,907,788,495.15

	1,040,650,327.65	584,686,079.24	1,795,325,398.96	1,055,015,703.83
	389,315,631.97	356,086,656.64	370,775,682.63	342,227,024.70
	371,315,924.53	308,192,217.36	287,055,804.37	236,601,777.50
	135,698,613.35	67,872,999.79	127,038,683.58	64,368,671.13
	99,592,957.71	30,668,895.74	70,569,834.62	22,857,842.09
	96,940,798.97	22,711,898.54	137,387,120.45	89,169,040.06
	33,886,892,669.3	31,833,624,125.69	29,588,446,202.11	27,729,030,503.25

3

	1,742,225,703.23	1,750,526,073.23
	5.14%	5.92%

46

	87,480,608.54	114,626,470.19
	41,526,063.52	126,591,979.56
	8,642,447.48	7,808,646.99
	4,328,865.48	5,032,185.94
	1,005,904.16	885,485.78
	25,668.48	
	10,800,207.61	8,231,324.94
	2,855,617.81	2,195,961.08
	106,710,442.38	13,164,765.95
	891,864.36	444,113.44
	232,073.32	199,754.76
	515,525.38	376,412.22
	351,800.16	667,592.67
	265,367,088.68	280,224,693.52

47

	236,718,213.89	186,643,755.32
	38,319,931.75	17,305,825.31

	-206,888,910.73	-169,949,501.94
	41,527,841.15	33,492,123.78
	33,037,212.56	32,880,551.85

48

	3,154,442.24	22,521,097.12
	139,562,452.27	56,783,758.31
	-	5,372,936.97
	142,716,894.51	84,677,792.40

49

	-46,904,987.15	15,648,839.67
	323,065.00	341,400.70
	-46,581,922.15	15,990,240.37

50

1

	438,276.00	464,199.00
	35,236,155.56	2,309,850.77
	-	14,026,572.32
	24,830,663.16	132,309,084.41
	-	15,085,217.76
	25,624,646.14	1,887,893.30
	6,700,000.00	3,444,290.00
	62,032,811.93	72,476,067.40
	5,425,371.57	-227,686.78
	160,287,924.36	241,775,488.18

2		
	438,276.00	464,199.00
3		
	38,447,356.31	-
	11,786,473.08	15,446,101.17
	4,022,445.04	4,395,455.58
	3,355,604.16	-2,542,866.96
	2,126,240.20	-64,410.39
	74,313.91	-
	64,660.04	-
	57,994.16	-10,456.59
	-97,017.20	-
	-261,736.29	-
	-514,997.75	-481,817.16
	-3,499,198.60	-
	-20,325,981.50	-14,912,126.63
	-	-48,115.10
	-	1,404,361.67
	-	-876,274.82
	35,236,155.56	2,309,850.77
	35,236,155.56	
56,972,003.70	21,735,848.14	

4		
	60,000,000.00	-
	2,032,811.93	72,476,067.40
	62,032,811.93	72,476,067.40

2

5

6

51

*1*2	52,175,425.40	43,688,575.13
*3	3,358,200.00	805,000.00
	1,439,669.60	327,317.30
	517,968.53	648,598.95
	84,526.25	380,000.00
	1,390,798.07	843,601.29
	58,966,587.85	46,693,092.67

1 52,175,425.40

	43,517,965.40	[2001]126 "	
		"	
		[2001]28 " "	
		[2003]57 "	
	1,350,000.00	2008 308	
	600,000.00	2008 4	
	4,500,000.00	2007 50	
	1,600,000.00	-	
6.18	200,000.00	2008 61	
	51,767,965.40	-	-

2 2003 2013

3

3,358,200.00

2,590,200.00

398,000.00

270,000.00

100,000.00

52

	4,274,465.39	186,939.52

	1,007,896.90	503,626.26
	1,295,365.00	797,876.00
	7,247.65	2,052.19
	374,229.97	143,048.00
	6,959,204.91	1,633,541.97

53

	156,862,402.33	177,351,539.37
	-30,011,006.40	-14,604,930.63
	126,851,395.93	162,746,608.74

54

		49.00%	46,864,599.08	26,574,793.34
		5.00%	9,207,748.54	15,978,567.33
		5.00%	3,592,153.86	3,789,987.57
		30.00%	3,047,926.66	2,804,414.32
		20.00%	2,132,749.29	-584,733.05
		49.00%	1,143,194.48	1,280,089.12
		50.00%	897,669.35	-
		20.00%	471,993.04	817,375.19
		33.00%	420,657.57	958,749.52
		30.00%	199,414.75	194,596.16
		30.00%	147,310.36	7,123,997.64
		20.00%	129,172.69	52,480.99
		30.00%	44,842.71	-12,448.07
		49.00%	-47,138.00	-
		20.00%	-63,901.85	-
		49.00%	-76,959.57	-125,944.78
		30.00%	-81,381.25	-20,283.87

		30.00%	-175,634.47	49,584.20
		45.45%	-210,424.82	1,095,638.78
		15.00%	-589,650.31	32,484.08
		-	-	-144,416.55
	-	-	67,054,342.11	59,864,931.92

55

1

1.		
	690,165,469.13	770,999,639.57
	142,716,894.51	84,677,792.40
	103,749,389.83	97,719,657.70
	14,519,493.87	14,704,461.02
	4,734,621.73	5,427,483.49
" "	2,602,964.25	-140,377.78
" "	231,831.54	57,686.66
" "	46,581,922.15	-15,990,240.37
" "	29,829,303.17	16,694,253.38
" "	-160,287,924.36	-241,775,488.18
" "	-28,263,734.98	-17,374,034.44
" "	6,993,246.45	2,769,103.81
" "	-875,882,198.11	-1,391,705,111.48
" "	293,290,950.20	-1,687,429,889.56
" "	469,360,189.95	1,837,864,052.87
	-	-
	740,342,419.33	-523,501,010.91
2.		
	-	-
	-	-
	-	-
3.		
	1,272,282,339.45	2,199,218,678.78
	2,199,218,678.78	674,046,022.82

	-	-
	-	-
	-926,936,339.33	1,525,172,655.96

2

1	32,000,000.00
2	32,000,000.00
	2,533,759.09
3	29,466,240.91
4	33,495,311.77

3

	1,272,282,339.45	2,199,218,678.78
	181,741.54	258,928.71
	1,268,745,232.24	2,198,959,750.07
	3,355,365.67	-
	-	-
	1,272,282,339.45	2,199,218,678.78

4

A

	122,590,000.00
	125,660,432.27
	108,000,000.00
	65,000,000.00
	52,175,425.40
	38,319,931.75
	511,745,789.42

B

	122,590,000.00
	124,158,142.80



	108,000,000.00
	70,199,634.97
	50,000,000.00
	36,661,337.23
	511,609,115.00

1

1

	57,479,792.30	17.37%	3,399,861.79	54,079,930.51
	-	-	-	-
	273,401,440.69	82.63%	7,474,503.12	265,926,937.57
	330,881,232.99	100.00%	10,874,364.91	320,006,868.08
	439,752,560.00	78.21%	2,635,628.79	437,116,931.21
	-	-	-	-
	122,503,462.37	21.79%	11,014,093.71	111,489,368.66
	562,256,022.37	100.00%	13,649,722.50	548,606,299.87

500

500

2

1	324,808,982.03	98.17%	8,367,576.39	316,441,405.64
1-2	2,391,145.97	0.72%	239,114.60	2,152,031.37
2-3	624,356.05	0.19%	187,306.82	437,049.23
3-4	1,503,506.84	0.45%	751,753.42	751,753.42
4-5	1,123,142.10	0.34%	898,513.68	224,628.42
5	430,100.00	0.13%	430,100.00	-
	330,881,232.99	100.00%	10,874,364.91	320,006,868.08

1	532,337,370.13	94.68%	10,726,192.00	521,611,178.13
1-2	24,196,357.30	4.30%	485,458.20	23,710,899.10
2-3	3,080,040.84	0.55%	924,012.25	2,156,028.59
3-4	1,999,144.10	0.36%	999,572.05	999,572.05
4-5	643,110.00	0.11%	514,488.00	128,622.00
5	-	-	-	-
	562,256,022.37	100.00%	13,649,722.50	548,606,299.87

其中：外币列示如下：

	6,163,451.79	6.8346	42,124,727.60	417,753.91	7.3046	3,051,525.21
	23,836,892.40	0.07565	1,803,260.91	-	-	-
	-	-	43,927,988.51	417,753.91	7.3046	3,051,525.21

3

5

	90,452,895.93	1	27.34%	13,261,521.10
	36,187,652.99	1	10.94%	65,244,836.51
	14,704,425.79	1	4.44%	-
The EXPORTING IMPORT COMPANY OF the MINIL	12,726,344.11	1	3.85%	-
BATTERY TEAM GROUP	10,884,314.84	1	3.29%	-8,419,546.83
	164,955,633.66	-	49.86%	70,086,810.78

2008 12 31

164,955,633.66

49.86%

4

	13,649,722.50	-	3,971,357.59	-1,196,000.00
	13,649,722.50	-	3,971,357.59	-1,196,000.00

5

2008 12 31

149,303,535.35

45.12%

10,124,499.95

3.06%

2

1

	1,220,985,162.85	93.28%	-	1,220,985,162.85
	-	-	-	-
	87,918,532.91	6.72%	1,114,519.49	86,804,013.42
	1,308,903,695.76	100.00%	1,114,519.49	1,307,789,176.27
	1,447,892,410.63	95.80%	433,794.36	1,447,458,616.27
	-	-	-	-
	63,534,421.55	4.20%	1,144,853.05	62,389,568.50
	1,511,426,832.18	100.00%	1,578,647.41	1,509,848,184.77

500

500

2

1	985,727,782.93	75.31%	1,020,396.85	984,707,386.08
1-2	300,424,886.82	22.95%	13,775.14	300,411,111.68
2-3	323,771.35	0.02%	22,560.00	301,211.35
3-4	276,111.08	0.02%	57,787.50	218,323.58
4-5	151,143.58	0.01%	-	151,143.58
5	22,000,000.00	1.68%	-	22,000,000.00
	1,308,903,695.76	100.00%	1,114,519.49	1,307,789,176.27
1	1,479,681,173.86	97.90%	1,476,721.54	1,478,204,452.32
1-2	7,307,640.66	0.48%	36,205.37	7,271,435.29
2-3	2,097,459.69	0.14%	65,720.50	2,031,739.19
3-4	319,846.90	0.02%	-	319,846.90
4-5	20,711.07	0.00%	-	20,711.07

5	22,000,000.00	1.46%	-	22,000,000.00
	1,511,426,832.18	100.00%	1,578,647.41	1,509,848,184.77

3

	694,632,821.61	53.07%		1
	291,066,918.80	22.24%		1
	121,521,098.00	9.28%		1
	66,270,656.31	5.06%		1
	40,910,403.62	3.13%		1
	33,473,715.22	2.56%		1
	22,000,000.00	1.68%		5
	9,384,717.35	0.72%		1
	4,776,603.77	0.36%		1
	1,284,036,934.68	98.10%	-	-
	5		1,214,401,898.34	

92.78%

4

-	1,578,647.41	-	464,127.92	-
				1,114,519.49

5

5%

5%

1,165,543,301.10

89.05%

50,000.00

0.004%

3

1

	2,658,680,710.13	869,991,051.13	483,681.13	3,528,188,080.13
	460,088,784.09	164,343,765.87	-	624,432,549.96
	-	120,000,000.00	3,499,198.60	116,500,801.40
	98,000,000.00	-	50,000,000.00	48,000,000.00
	3,216,769,494.22	1,154,334,817.00	53,982,879.73	4,317,121,431.49
	-	-	-	-
	3,216,769,494.22	1,154,334,817.00	53,982,879.73	4,317,121,431.49

	1,360,029,658.81	-	-	1,360,029,658.81
	360,961,572.57	380,000,000.00	-	740,961,572.57
	24,700,000.00	260,300,000.00	-	285,000,000.00
	253,135,511.43	-	-	253,135,511.43
	195,000,000.00	-	-	195,000,000.00
	95,000,000.00	95,000,000.00	-	190,000,000.00
	47,500,000.00	47,500,000.00	-	95,000,000.00
	51,589,900.00	-	-	51,589,900.00
	50,000,000.00	-	-	50,000,000.00
	4,750,000.00	42,750,000.00	-	47,500,000.00
	5,130,000.00	42,370,000.00	-	47,500,000.00
	29,730,893.77	-	-	29,730,893.77
	20,000,000.00	-	-	20,000,000.00
	19,000,000.00	-	-	19,000,000.00
	15,300,000.00	-	-	15,300,000.00
	15,200,000.00	-	-	15,200,000.00
	15,200,000.00	-	-	15,200,000.00
	12,629,803.36		-	12,629,803.36
	10,101,245.37	-	-	10,101,245.37
	9,500,000.00	-	-	9,500,000.00
	8,646,977.07	-	-	8,646,977.07
	8,300,111.62	-	-	8,300,111.62
	7,595,142.93	-	-	7,595,142.93
	5,100,000.00	-	-	5,100,000.00
	5,000,000.00	-	-	5,000,000.00
	5,000,000.00	-	-	5,000,000.00
	5,000,000.00	-	-	5,000,000.00
	4,804,147.20	-	-	4,804,147.20
	4,750,000.00		-	4,750,000.00
C&D CANADA IMPORT&EXPORT INC.	1,725,746.00	1,402,800.00	-	3,128,546.00
	2,800,000.00	-	-	2,800,000.00
	2,500,000.00	-	-	2,500,000.00
	2,500,000.00	-	-	2,500,000.00
C&D USA INC.	-	684,570.00	-	684,570.00
	250,000.00	11,014.19	261,014.19	-
	250,000.00	-27,333.06	222,666.94	-
	50,000,000.00	-	50,000,000.00	-
	48,000,000.00	-	-	48,000,000.00
	2,756,680,710.13	869,991,051.13	50,483,681.13	3,576,188,080.13

3

	37.50%	37.50%	100,000,000.00	-	33,053.14	-
	20.00%	20.00%	2,000,000.00	268,000,000.00	-34,530,205.31	-
	40.00%	40.00%	16,800,000.00	97,200,000.00	11,471,185.09	-
	30.00%	30.00%	57,866,620.54	-	-14,205,446.58	-
	40.00%	40.00%	20,000,000.00	-	115,674.31	-
	50.00%	50.00%	120,000,000.00	-	-3,499,198.60	-
	20.00%	20.00%	2,000,000.00	-	-97,017.20	-
	20.00%	20.00%	50,000,000.00	-	47,778,685.97	-
	-	-	368,666,620.54	365,200,000.00	7,066,730.82	-

	100,000,000.00	-	33,053.14	-	100,033,053.14
	255,050,949.09	-	-19,581,154.40	-	235,469,794.69
	83,518,182.84	30,000,000.00	11,953,002.25	-	125,471,185.09
	21,519,652.16	-	22,141,521.80	-	43,661,173.96
	-	20,000,000.00	115,674.31	-	20,115,674.31
	-	120,000,000.00	-3,499,198.60	-	116,500,801.40
	-	2,000,000.00	-97,017.20	-	1,902,982.80
	-	50,000,000.00	47,778,685.97	-	97,778,685.97
	460,088,784.09	222,000,000.00	58,844,567.27	-	740,933,351.36

4

1

	20,826,262,135.10	21,648,558,288.20
	20,809,042,879.52	21,622,193,862.82
	17,219,255.58	26,364,425.38
	20,138,587,775.33	20,995,065,345.97
	20,126,673,942.81	20,971,240,933.14
	11,913,832.52	23,824,412.83

2

	11,556,136,905.32	11,069,433,070.12	10,849,505,637.15	10,446,944,361.92
	9,252,905,974.20	9,057,240,872.69	10,772,688,225.67	10,524,296,571.22
	17,219,255.58	11,913,832.52	26,364,425.38	23,824,412.83
	20,826,262,135.10	20,138,587,775.33	21,648,558,288.20	20,995,065,345.97

5

1

	578,731,621.42	110,087,926.10
	17,440,079.33	-17,936,810.75
	-16,318.87	10,810,216.49
	7,509,688.48	50,610,624.24
	-	15,085,217.76
	710,000.00	420,000.00
	27,991,831.69	28,728,541.71
	84,452,711.93	72,476,067.40
	716,819,613.98	270,281,782.95

2

	266,000,000.00	-
	66,581,803.82	-
	63,220,996.74	66,500,000.00
	62,647,726.22	-
	31,833,867.87	7,092,933.61
	27,169,241.14	8,861,608.74

	22,528,608.17	7,246,500.75
	11,038,175.20	7,910,737.51
	10,127,278.42	-
	7,342,293.20	4,039,450.23
	2,469,492.46	1,426,226.13
	1,960,000.00	600,000.00
	1,252,485.38	1,327,362.53
	1,002,335.97	712,769.70
	1,000,000.00	-
	688,752.11	-
	669,239.06	1,954.43
	565,784.36	2,786,172.25
	494,031.04	-
	127,731.71	-
	11,778.55	8,064.12
	-	469.28
	-	21,144.23
	-	1,420,116.88
	-	132,415.71
	578,731,621.42	110,087,926.10

3

	38,447,356.31	-
	3,355,604.16	-2,542,866.96
	74,313.91	-
	-97,017.20	-
	-514,997.75	-481,817.16
	-3,499,198.60	-
	-20,325,981.50	-14,912,126.63
	17,440,079.33	-17,936,810.75

4

	11,014.19	-
	-27,333.06	-
	-	11,800,000.00
	-	614,429.41
	-	542,548.88
	-	317,215.15



	-	232,017.39
	-	175,750.28
	-	-1,706.09
	-	-425,585.00
	-	-906,581.61
	-	-1,537,871.92
	-16,318.87	10,810,216.49

5

	60,000,000.00	-
	2,032,811.93	72,476,067.40
1 *	22,419,900.00	-
	84,452,711.93	72,476,067.40

" 1 " 55%

45%

22,419,900.00

6

6

*1	19,067,020.94	44,188,316.21
*2	-24,929,296.90	-11,916,799.82
	-5,862,275.96	32,271,516.39

1

2

1

			300,000.00	15499061-7	46.10%	46.10%



	1,280,433.38	-	3,275,076.23	0.01%	
	299,145.30	-	14,715,125.64	0.05%	
	73,316.24	-	941,246.20	-	
	11,111.11	-	55,976.07	-	
	51,792,919.45	0.14%	88,367,197.54	0.30%	-

2

	72,227,590.84	0.21%	2,719,283.40	0.01%	
	25,347,120.83	0.07%	107,447,381.60	0.36%	
	1,472,700.00	-	2,599,090.00	0.01%	
	1,310,369.78	-	153,867.97	-	
	538,625.00	-	-	-	
	325,190.00	-	1,103,680.40	-	
	167,156.35	-	-	-	
	148,169.90	-	20,776.02	-	
	118,657.00	-	198,724.35	-	
	-	-	27,124,668.67	0.09%	
	-	-	12,000,000.00	0.04%	
	101,655,579.70	0.28%	153,367,472.41	0.52%	-

3

	1,438,340.40	-	1,035,568.80	-	
	-	-	1,308.68	-	
	-	-	16,460.00	-	
	1,438,340.40	-	1,053,337.48	-	-

2.

" "

6000

2007

12000

2,032,811.93

70

80

## 3.

1 2008 12 31

USD23,540,600.00

3.1

2 2008 12 31

		RMB276,403,040.00	-	6.91%
		RMB1,378,906,840.00	-	34.47%
		RMB604,065,580.00	-	15.10%
		RMB65,000,000.00	-	1.63%
		USD19,928,826.13	-	3.41%
		USD534,193.74	-	0.09%
		RMB874,613.01	-	0.02%
		RMB28,469,781.31	-	0.72%
		USD127,000.00	-	0.02%
		RMB342,385,753.21	-	8.56%
		USD 29,045,810.50	-	4.96%
		RMB18,130,000.00	-	0.45%
		RMB73,980,000.00	-	1.85%
		USD350,000.00	-	0.06%
		RMB24,410,000.00	-	0.61%
		RMB18,805,800.00		0.47%
		RMB30,000,000.00	-	0.75%
		USD10,553,325.00	-	1.80%
		USD3,886,635.00	-	0.66%
		USD104,800.00	-	0.02%
		USD1,755,800.00	-	0.30%
		RMB1,160,400.00	-	0.03%
		RMB89,447,987.21	-	2.24%
		RMB53,560,000.00	-	1.34%
		RMB16,140,224.49	-	0.40%
		USD1,530,000.00	-	0.26%
		RMB172,820,200.00	-	4.32%
		USD15,985,700.00	-	2.73%
		RMB7,333,905.90	-	0.18%
		RMB5,441,293.68	-	0.14%
		USD24,900.00	-	0.00%
		USD1,315,500.00	-	0.22%
		USD4,338,700.00	-	0.74%

		RMB7,713,381.00	-	0.19%
		USD911,500.00	-	0.16%
		USD134,200.00	-	0.02%
		USD671,100.00	-	0.11%
		RMB800,000.00	-	0.02%
		USD7,300.00	-	0.00%
		USD789,200.00	-	0.14%
		RMB84,300.00	-	0.00%
		USD31,900.00	-	0.01%
		USD384,800.00	-	0.07%
		USD41,554.00	-	0.01%
		RMB7,930,013.00	-	0.20%
	-	RMB3,223,863,112.81 USD92,452,744.37	-	96.39%

3 2008 12 31

	120,000,000.00	-	3 2
	110,000,000.00	-	
	15,000,000.00	-	
	1,366,310,000.00	-	
	668,670,000.00	-	
	425,000,000.00	-	
	160,000,000.00	-	
	703,000,000.00	-	
	278,150,000.00	-	
	5,000,000.00	-	
	170,000,000.00	-	
	112,000,000.00	58,000,000.00	
	108,640,000.00	-	
	21,500,000.00	-	
	62,960,000.00	-	
	87,500,000.00	-	
	12,750,000.00	-	
	36,440,000.00	-	
	34,000,000.00	-	
	100,260,000.00	-	

	17,170,000.00	-	
	14,380,000.00	-	
	51,540,000.00	-	
	14,860,000.00	-	
	65,000,000.00		
	2,713,730,000.00	20,100,000.00	
	7,473,860,000.00	78,100,000.00	-

4 2008 12 31

		30,619,008.00	-	2.39%
		3,000,000.00	-	0.23%
		20,000,000.00	-	1.56%
		30,000,000.00	-	2.34%
		3,836,280.00	-	0.30%
	-	87,455,288.00	-	6.82%

5 2008 12 31

	99,000,000	
	50,000,000	
	20,000,000	3 4
	169,000,000	

4.

1 2008 1  
 3,850,000.00  
 2008 1 1 2008 12 31  
 3,850,000.00

2 9,478,511.34

2008 12 31

260,000.00 2008 12 31

2008						
		2,175,507.87	1.36%		-	-
		102,130.00	0.06%		2,905,705.90	0.55%
		-	-	-	2,905,615.59	0.55%
		7,006,426.57	1.06%		7,638,790.97	1.20%
		5,528,249.79	0.84%		12,104,049.47	1.89%
		2,791,152.39	0.42%		10,218,695.34	1.60%
		2,212,616.48	0.34%		11,149,900.38	1.75%
		1,924,716.02	0.29%		-	-
		675,324.00	0.10%		2,852,566.20	0.45%
		168,370.00	0.03%		9,984.00	0.002%
		112,084.50	0.02%		670,993.80	0.11%
		11,524.60	-		134,474.60	0.02%
		5,192.01	-		-	-
		-	-	-	31,908.68	0.005%
		272,500.00	0.01%		-	-
		-	-	-	11,905,524.00	0.52%
		-	-	-	1,000,000.00	0.04%
		50,000.00	0.02%		1,091,935.62	0.30%
		-	-		15,000,000.00	4.18%
		1,635,820.53	0.10%		-	-
		-	-	-	18,052.81	0.001%
		1,439,400.00	0.06%		-	-
		1,351,602.50	0.06%		-	-
		445,140.00	0.02%		416,542.00	0.02%
		150,000.00	0.01%		-	-
		16,400.00	-		-	-
		103,036,300.24	17.89%		118,867,092.75	23.96%
		2,286,360.49	0.40%		3,849,324.91	0.92%
		446,091.42	0.08%		-	-
		24,750.00	-		15,790.00	0.004%
		-	-		3,000,191.56	0.72%

		2008	12	31				
				"				8,000
				3,920	49%			
2,000				25%				2,080
26%	2008	12	31					
				3,920				
24	36							
	2007			"				
								10
		2008			2009			
		2008	12	31				
					2009	1	20	
1				95%				44.654%
				2008	6	30		
	2008	6	30					
					196,748.87			177,074
95%	168,220				418,576.59			





2007 8 16  
NATIXIS

2008 12 31

1 — "

[2008]43 "

	-2,834,795.79	14,166,950.10
	-	-
	12,175,425.40	3,688,575.13
*2	-	-
	-	-
	-	-
	-	-
	5,473,971.57	-
	-	-
	-	-
	-	-
	-	-
	-	-
	-	-
	-2,840,873.38	148,299,324.78
	-	-
	6,700,000.00	3,444,290.00
	-	-
	-	-

	-	-
	2,666,753.33	1,230,597.79
	-	-
	21,340,481.13	170,829,737.80
	659,997.07	22,607,975.79
	20,680,484.06	148,221,762.01
	7,986,280.60	2,532,486.31
	12,694,203.46	145,689,275.70
	610,416,923.56	565,445,431.95

1

"

"

2

"

[2001]126 "

4000

"

"

4000

9 ---

2007

1 ---

"

[2008]43 "

1.

I	12.16%	12.36%	0.50	0.50
II	11.91%	12.11%	0.49	0.49

I	14.55%	20.48%	0.62	0.62
II	11.57%	16.29%	0.49	0.49

2.

	1	623,111,127.02	711,134,707.65
	2	12,694,203.46	145,689,275.70
	3=1-2	610,416,923.56	565,445,431.95
	4	690,663,809.00	617,600,000.00
	5	552,531,047.00	-
	6	-	73,063,809.00
	7	-	3
	8	-	-
	9	-	-
	10	12	12
	11=4+5+6×7÷10-8×9÷10	1,243,194,856.00	635,865,952.25
	12	-	508,692,761.80
	13=11+12	1,243,194,856.00	1,144,558,714.05
I	14=1÷13	0.50	0.62
II	15=3÷13	0.49	0.49
	16	-	-
	17	-	-
	18	-	-
	19	-	-
I	20=[1+ 16-18 × 1-17 ]÷ 13+19	0.50	0.62

---

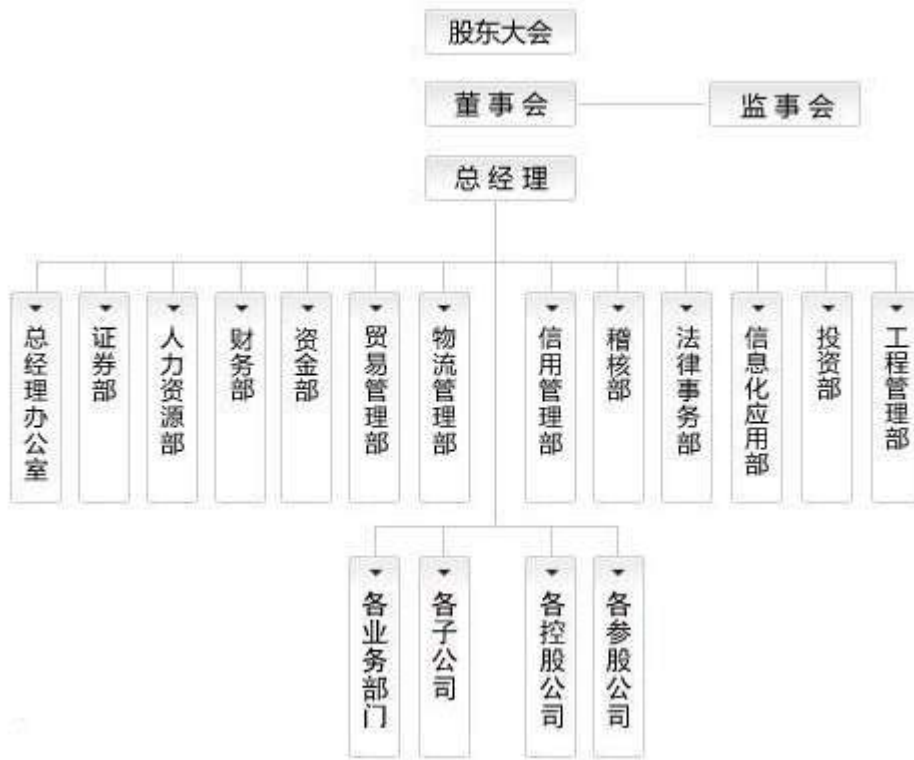
II	$21 = [3 + 16 - 18 \times 1 - 17] \div 13 + 19$	0.49	0.49

---

2009 4 13

2009 4 13

本公司董事会及全体董事保证本报告内容不存在任何虚假记载、误导性陈述或重大遗漏，并对其内容的真实性、准确性和完整性承担个别及连带责任。



2

ISO

3

4

"

"

1

2

3

4

5

6

1

2

3

4

5



ISO

1 1

2009 4 13

# 2008

本公司董事会及全体董事保证本报告内容不存在任何虚假记载、误导性陈述或重大遗漏，并对其内容的真实性、准确性和完整性承担个别及连带责任。

		"	"	"	"	
						1998
6	16					
		" AAA	"	"		"
			300		180	
	2008		158.09		51.24	
	338.87		6.9			17.17
		"	"	"		
		"		"		
		2008	12	18	-	
"	2008		"			"
"	86					

				2008	"
	"				
				35%	
32%	10	14. 277	57. 45%		
			2005		
"	"				
		" AAA	"		

3

4

LOW E

5					
		"	" "	" "	"
8					112750
	618685.70				370
1376					

2008

00